

# CAR PARKS 2012/1



**AMP Parking GmbH**  
Planung und Beratung für Parkbauten

E-Mail : [Info@amp-parken.de](mailto:Info@amp-parken.de)  
Internet : [www.amp-parken.de](http://www.amp-parken.de)

Körnerstraße 25 · D-76135 Karlsruhe  
Telefon: 0721 / 985 74 - 0 · Fax: 0721 / 985 74 - 99

## Refurbishment of the Rotteckring car park in Freiburg / Breisgau



Entrance 1st basement before the renovation

Photo: IGB, Biberach



Exit 1st Basement after the renovation

Photo: AMP

### Description:

The underground car park Rotteckring in Freiburg / Breisgau was built in the years 1969/70 on the basis of an AMP design in "covered construction". A department store is located on top of the car park. Once significant chloride loads have been identified, the building owner decided to do a complete refurbishment. The refurbishment was also used as an excuse to adapt the parking bay geometry to today's car dimensions. This reduced the former number of 396 parking places by 48 places to 348 places.

The fire protection requirements were also adjusted to today's standards. The four basement levels, which previously were - according to the regulations in the former building code - only one fire compartment, were divided into two separate compartments, wherein the first together with the second, as well as the third together with the fourth basement are a fire compartment now.

In this context, the operating system was upgraded, too. The Rotteckring car park together with four other car parks will now be operated centrally from a control center, which is located in the Konzerthaus car park.

### Building owner:

Freiburger Kommunalbauten GmbH Baugesellschaft & Co. KG, represented by Freiburger Stadtbau GmbH

### Design performance by AMP:

Traffic design, fire doors, floor marking, signage and car park operating system

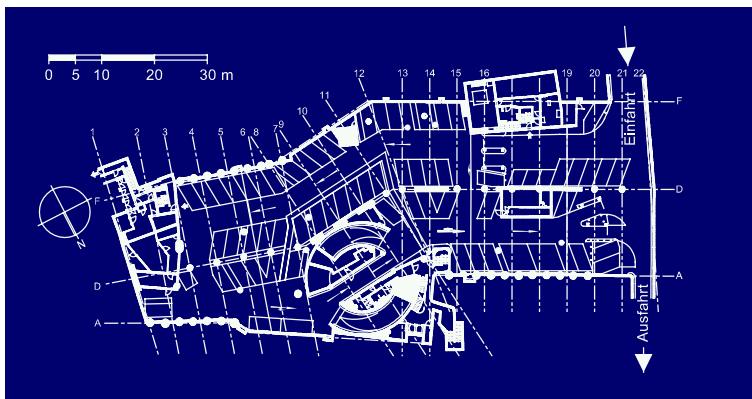
### Specifications:

|   |                   |
|---|-------------------|
| Number of parking places:               | 348 cars          |
| Width of parking places:                | 2,40 m and 2,50 m |
| Parking angle:                          | 70 ° and 80 °     |
| Renovation beginning:                   | January 2012      |
| Partial opening (1st and 2nd basement): | December 2012     |
| Destined completion:                    | June 2013         |



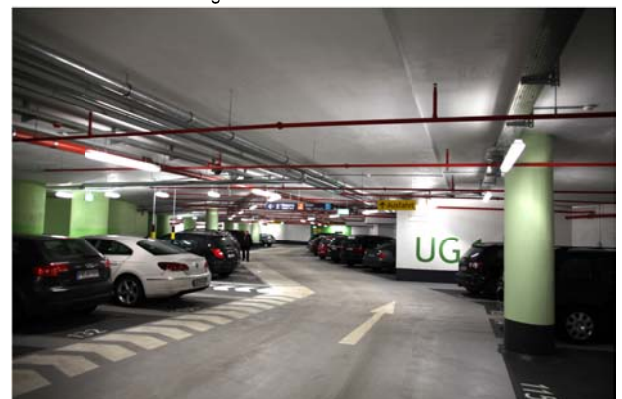
Ticket machines on the ground floor after renovation

Photo: AMP



Floor Plan 1st basement

Drawing: AMP



Parking aisle D - F 1 UG after renovation

Photo: AMP